



New Awardee Session

Essential Info for New Noyce Projects

Welcome!

Please sit at tables by Noyce Track.



Robert Noyce Teacher Scholarship Program



Noyce Summit
2023

New Awardee Session:
Essential Info for New Noyce Projects

Noyce Team Program Officers



**Kathleen B. Bergin,
Noyce Lead**



**Jennifer Ellis,
Noyce Co-Lead**



James Alvarez



Mindy Capaldi



Bonnie Green



John Haddock



Jennifer Lewis



Julio Soto



Kimberly Tanner



Patrice Waller

Today's Session Outline 2:00-3:30 pm

Welcome and Introductions

Nuts & Bolts of Noyce Program & Overview of Grantee Responsibilities

Budgets with Division of Grants and Agreements (DGA)

Noyce Annual Survey

Peer-to-Peer Discussion & Mentorship

Meet your PO

Continued Peer-to-Peer Discussion & Mentorship



Quick Table Introductions

Time to introduce yourselves around the table!

Your name, your institution/organization, &
one strategy your project will use:

Track **CB**: one **relationship-building** strategy

Tracks **1-3**: one **recruitment** strategy

Track **4**: one **data management** strategy



Register Your New Noyce Project

The Robert Noyce Teacher Scholarship Program



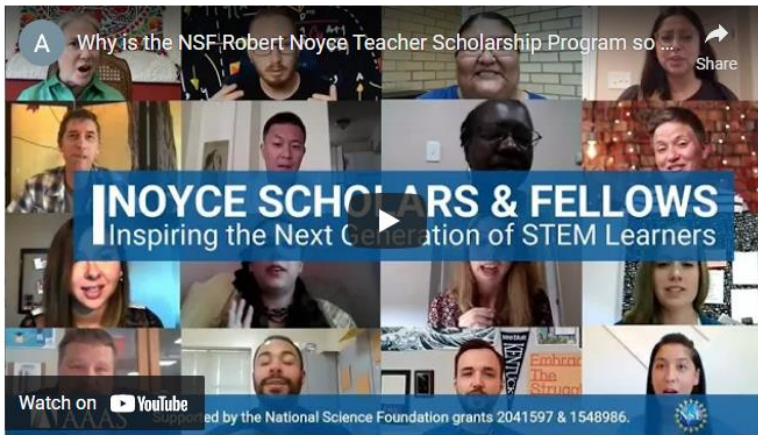
Search

Project Locator

Website ([nsfnoyce.org](https://www.nsfnoyce.org))
maintained by AAAS



Robert Noyce Teacher Scholarship Program



The **Robert Noyce Teacher Scholarship Program** provides funding to institutions of higher education to provide scholarships, stipends, and programmatic support to recruit and prepare STEM majors and professionals to become K-12 teachers. The program seeks to increase the number of K-12 teachers with strong STEM content knowledge who teach in high-need school districts.

What's New

[2021 Noyce Summer Events](#)

[2021 Noyce Project Videos](#)

[Proposal Preparation Webinars](#)

[2020 Virtual Noyce Summit](#)

[2020 Noyce Project Videos](#)

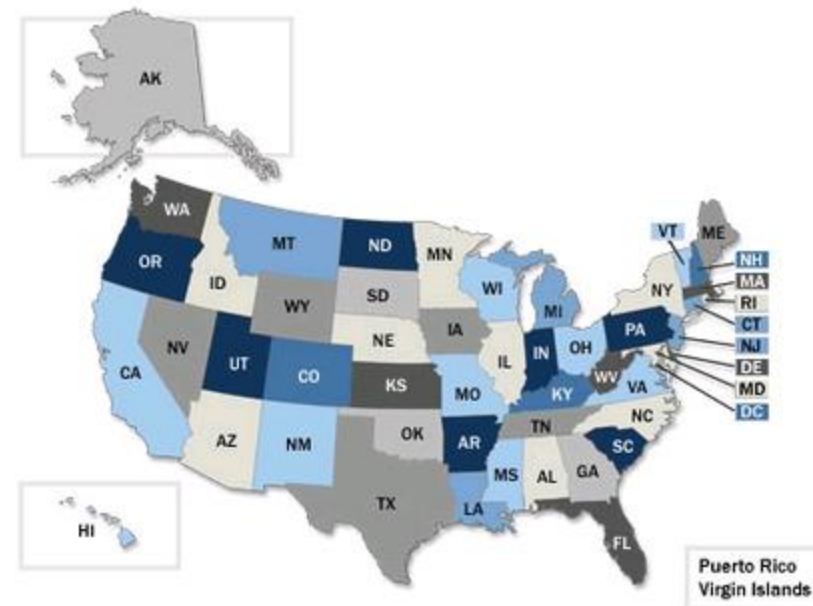
[Frequently Asked Questions for the Robert Noyce Teacher Scholarship Program](#)

[Become a Noyce Scholar or Teacher Leader](#)

[Consider Becoming an NSF Noyce Principal Investigator](#)

[Noyce Alumni: Where Are They Now?](#)

Use the Project Locator to search for active and archived Noyce projects in your area.



Visit www.nsfnoyce.org/add-project/ to add your info.



Other Available Noyce Resources

- www.nsfnoyce.org
 - Find conference information, contact info for other projects, alumni profiles, etc.
 - www.nsf.gov
 - Regional Noyce Conferences
 - Southeast, Northeast, Midwest, and Western
 - Other Noyce PIs
 - Recruitment ideas, Monitoring and Compliance Plans, Student Agreement Forms, etc.
 - Your Cognizant Noyce Program Officer
- ** Consider serving as a reviewer for Noyce proposal submissions. Email interest (with vita attached) to Program Lead or any Noyce PO.**





Guidance for New Awardees and New PIs/co-PIs



Be Familiar with the PAPPG



Contains documents relating to NSF's proposal and award process.

Designed for use by both you (the PI and potential PI community) and NSF staff.

NSF 23-1: <https://new.nsf.gov/policies/pappg/23-1>

Consists of two parts:

Part I is NSF's proposal preparation and submission guidelines.

Part II is NSF's award and administration guidelines.



Be Familiar with NSF Reporting Requirements, Research.gov

Use Research.gov to submit :

- Request change in PI/Co-PI (withdraw, add, change level of effort)
- Request to change Participant Support (while maintaining 60% of total Direct Cost on line F1 of budget for Tracks 1-3)
- Request for a no-cost extension
 - First time: *Grantee-Approved No Cost Extension*
 - Second or more: *NSF-Approved No Cost Extension*
- Request to add a subawardee
- **ANNUAL REPORTS**



Reporting Requirements (submit via Research.gov)

4 types of NSF project reports

Annual report (*required*)

Interim report

Final report (*required*)

Project outcomes report (*required*)



Reporting Requirements (submit via Research.gov)

Annual reports detail progress, including the way funds are used.

- Due (electronically) during 90-day period **BEFORE award anniversary date**. Overdue after 90-day period ends.

Please submit well before the report becomes overdue.

- Report on the last 12 months (since last report).
- Only PIs/co-PIs may create, edit, and submit. Others (*i.e.* SROs) may have read-only access.

Helpful NSF FAQs for Report Submissions:

https://www.research.gov/common/attachment/Desktop/RPPR_FAQ.pdf



Annual Reports Should Include ...

- Activities and Findings : Identify major goals, what was accomplished, what was learned, what was modified, and project highlights.
- Products: What has the project produced? Publications, conference presentations, website, brochures, external evaluation report or Advisory Board feedback (Track 4)?
 - *Note the NSF grant number and disclaimer should be included as part of all products (per the PAPPG).*
- Participants & Other Collaborating Organizations: Who has been involved (other IHEs, non-profits, school districts)?
- Impact: What is the impact of the project?
- Changes/Problems: Address changes recommended in evaluation report for sure.
- Plans for the upcoming year:



Annual Reports Should Include ...cont.

- Dissemination: What products have been disseminated? How? Where?
- Special Reporting Requirements for T1, T2, and T3 projects:
 - Specifics of recruitment and retention efforts
 - # recipients supported compared to # proposed (and **majors** of those supported)
 - # recipients who withdrew, were dismissed, or are in repayment
 - Demographic data for scholars/fellows (*i.e.* ethnicity, gender, disability)
- Evaluation Report: Include formal report from external evaluator (sometimes excluding year 1). *make sure to respond to any recommendations from the report; if it is a Track 4 project that has an Advisory Board, the Board's feedback should be included*



Miscellaneous Annual Report Specifics for Track 4: Noyce Research

- Annual reports should clearly detail what has been learned, data collected, any data analysis, findings, external evaluation/or Advisory Board report/recommendations, etc.
- Expectation that publications will result from research.

Additional Reporting Requirements

- For Tracks 1 – 3, annual Data Collection for Noyce Monitoring (*more to come about this later today*).
- For TF/MTF only: Annual cost sharing report submitted through Research.gov.
- At the conclusion of award (all Tracks):
 - Final (annual) report due within 120 day period AFTER project's expiration date.
 - Project outcomes report submitted through Research.gov.



QUIZ
TIME!

True or False?

1. Noyce scholarship (T1) or stipend (T2) funds can be used to support STEM education majors.

FALSE (mostly False)—Noyce scholarship and stipend recipients must earn or possess a baccalaureate degree in a STEM discipline. However, in addition to earning a baccalaureate degree in a STEM discipline, scholarship recipients may also earn a dual degree in education or have a minor in education. The terms scholarship and stipend are used here as defined in the Noyce solicitation NSF 21-578.

2. The number of scholars/fellows that the project plans to recruit during the project may change.

Answer: FALSE/TRUE ... TRICK QUESTION!—The minimum number of scholars/fellows that a project “plans to recruit” as presented in the reviewed and funded proposal, should remain the same. However, it is commendable if a project exceeds the minimum # proposed. If the project is having difficulty recruiting, the project cannot just decide to reduce the number of scholars/fellows. The project should consult with the NSF Cognizant Program Officer and work on new/different strategies to approach meeting the project’s original goals.



True or False?

3. The number of scholars/fellows that the project plans to recruit each year may be different from the actual number recruited.

Answer: **TRUE**— While the overall goal of the number of scholars/fellows to be recruited and prepared over the lifetime of the award should stay the same, the number of Scholars/Fellows recruited each year may vary from the targeted goal. It is not unusual for the number in the first year to be less than hoped for, but then recruit a higher number in subsequent years to meet its goal over the lifetime of the award.

4. If a scholar/fellow drops out of the project, the project only needs to recruit another Scholar/Fellow.

ANSWER: **FALSE**—In this circumstance, the Scholar/Fellow must initiate repayment of the support they have received. There are specific guidelines as to how much must be repaid (see solicitation 21-578) and process for returning funds to the institution, NSF, or U.S. Department of the Treasury (see Cognizant NSF PO). These returned funds may not be used to support another scholar/fellow. However, if there are funds remaining in the project's budget to support another scholar/fellow through degree and teacher certification completion (for T1 and T2) or through the salary supplement period (for T3), this is allowable and to be encouraged.



5. If a scholar or fellow does not complete the required teaching service requirement, the institution's policy regarding repayment of the scholarship should be enacted.

ANSWER: **TRUE**— If a scholar/fellow defaults on the required teaching commitment, then the institution's policy on defaulting on a loan should be followed. The information on failing to complete the program or the teaching service obligation should be provided to the scholar/fellow before s/he accepts the financial support. The grantee's legal and financial aid office may be useful in creating the legally binding document that the recipient scholar/fellow signs prior to accepting the financial support. Solicitation 21-578 provides guidance on grace periods and hardship exceptions.

6. Noyce scholars/fellows who can't find a job in a high-need district can satisfy Noyce requirements through teaching in any school district.

ANSWER: **FALSE**—The service requirement for teaching **MUST** be done by teaching in a high-need school district. It does not have to be in a partner district named in the proposal. It could be any high-need school district in the U.S. A project cannot require a scholar/fellow to teach in a specific state or district.



7. Remaining funds in a project's annual budget will carry over to the budget for the next year.

ANSWER: **TRUE**. Any unspent funds in a given year (except the last year of the project) will rollover to the next year and can be used, as designated, in the subsequent year.

8. Grantees may reallocate funds (*i.e.* move money) in the budget into different categories.

ANSWER: **TRUE** (with a few exceptions)—As long as the money is being spent for allowable expenditures, there is no problem with moving money from one category to another. However, note that no funds may be moved out of Category F. Participant Support without approval from NSF. The 60% cost of attendance to direct costs ratio **MUST** be maintained, when moving money around. Also, no new subawards may be added without formal NSF approval.



9. If tuition increases after the project begins, then the project's scholarship amount can be increased.

ANSWER: **TRUE**—If there are sufficient funds in the budget to increase the scholarship amount and still support the number of scholars/fellows as stated in the reviewed and funded proposal, then this is possible. However, no additional funds will be provided to the grantee from NSF for this purpose.

10. All Noyce scholars can receive scholarship support for a maximum of three years.

ANSWER: **True and False/Trick Question:** Awards made under solicitation 21-578 may fund undergraduates up to three years starting in the junior year as long as they are undergraduates (in other words, they don't graduate until they are certified.) Projects awarded under solicitation 21-578 and before, may fund undergraduates for up to three years, junior and senior year plus post-baccalaureate year, ONLY when the institution does not certify teachers at the undergraduate level and therefore requires a post-baccalaureate year for certification.





NSF Post-Award Management

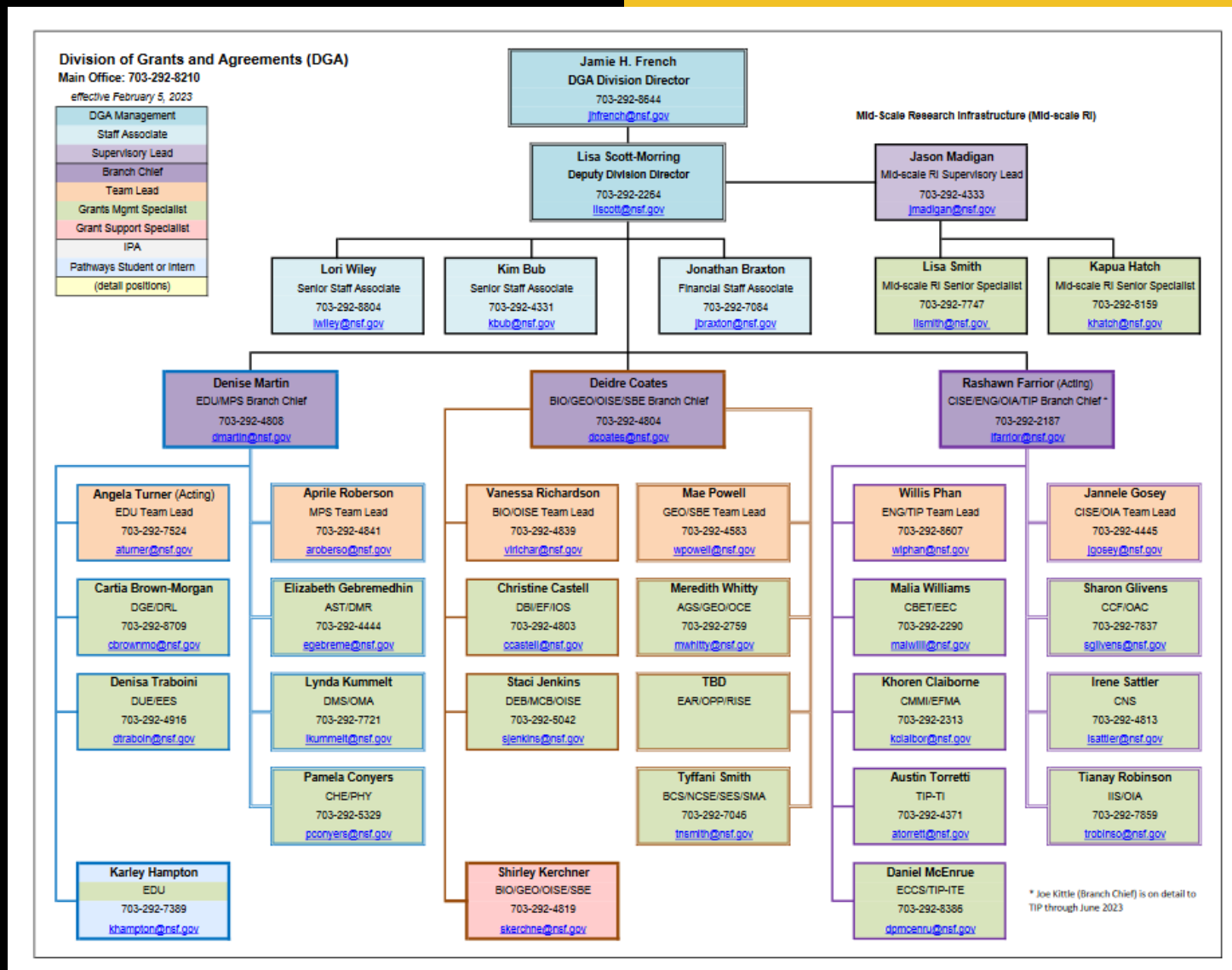
Presented by: Lynda Kummelt

DGA MISSION STATEMENT

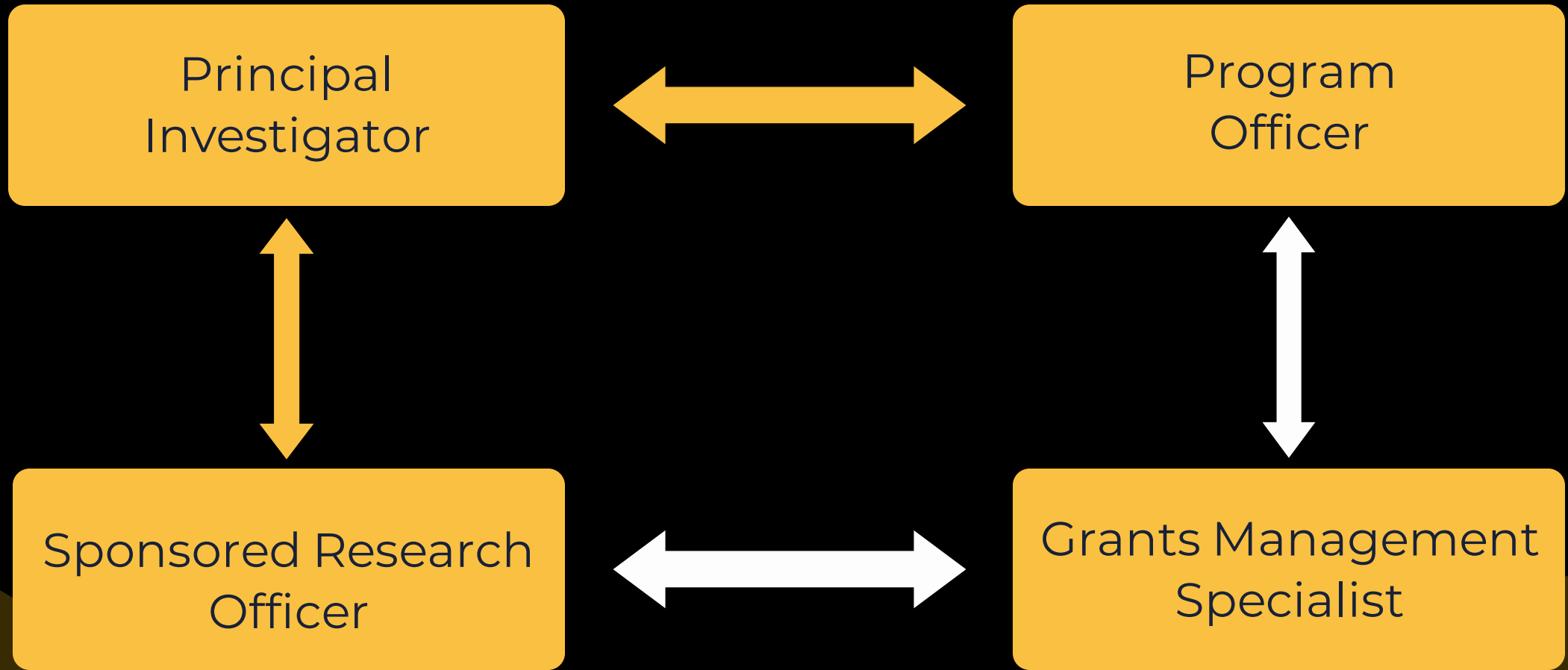
“Support the issuance of NSF assistance awards and other agreements by providing business, financial, and award administration assistance from pre-award through closeout.”

DGA organization chart with contact info for award-specific questions:

<http://www.nsf.gov/bfa/dga/docs/liaison.pdf>



WORKING RELATIONSHIPS



NOTIFICATION & REQUESTS

www.Research.gov

v

NSF Research.gov
ONLINE GRANTS MANAGEMENT FOR THE NSF COMMUNITY

Sign In | Register | Home | Contact | Help | About

+ Show all notifications (3 notifications)

Research.gov Demo Site Now Available!

[FAQs & Video Tutorials](#)

Explore initiating and developing Research.gov proposals before you prepare them in the actual Research.gov Proposal Submission System.

- Prepare & Submit Proposals**
Prepare, submit and check status of proposals
 - Letters of Intent and Proposals
 - Demo Site: Prepare Proposals
 - Check Proposal Status**FASTLANE PROPOSAL FUNCTIONS**
 - Additional proposal functions
- Proposal/Panel Review**
Review proposals, participate in panels
 - FASTLANE PROPOSAL REVIEW**
 - Proposal Review
 - FASTLANE PANEL REVIEW**
 - Panelist Functions
- Awards & Reporting**
Submit project reports, notifications & requests, and supplemental funding requests
 - Project Reports
 - Continuing Grant Increments Reports
 - Award Documents
 - Deposit Public Access Publication
 - Example Project Reports (Demo site)
 - Notifications & Requests
 - Supplemental Funding Requests
- Fellowships & Honorary Awards**
Nominate colleagues, apply for awards
 - Graduate Research Fellowship Program (GRFP)
 - Postdoctoral Fellowships and Other Programs
 - Honorary Awards



NO-COST EXTENSIONS (NCE)

www.Research.go

v

- Must have funds remaining on award (or perform upward modification in ACM\$).
- Must have work left to complete that is in the original scope of the project.
- Approvals:
 - 1st NCE – Grantee can self-approve 1 year via a notification
 - 2nd NCE – Program Level Approval
 - 3+ NCE – Program Recommend, DGA Level Approval



TOP 3 REASONS FOR DELAYS

IN AWARD PROCESSING



OVERDUE PROJECT REPORTS

Annual Project Reports (APR), Interim Reports, Final Annual Project Reports (FPR), and Project Outcomes Report for the General Public (POR).



NOT FOLLOWING SOLICITATION REQUIREMENTS

DGA reviews the proposal to ensure budgetary and administrative conditions are in accordance with the solicitation.



UNALLOWABLE OR UNJUSTIFIED BUDGET ITEMS

PAPPG [II.D.2.f\(xiii\)](#) & 2 CFR 200, Subpart E provides comprehensive information regarding costs allowable under Federal awards.



REPORTING REQUIREMENTS

Annual Project Report (APR)

Must be approved by the NSF Program Officer.

Annual reports are due **90** days prior to the end of the current budget period.

Final Reports (FPR)

Must be approved by the NSF Program Officer.

Final reports are due **120** days after the end date of the award.

Project Outcomes Report (POR)

Not approved by the NSF Program Officer.

Project Outcomes Report are due **120** days after the end date.

FAPIIS

5 Year Suspension



OVERDUE REPORTS

Failure to provide these reports on a timely basis will delay NSF review and processing of pending proposals for all identified PIs and co-PIs on a given grant.

[Note: Reports in a 'Returned to PI' status is considered overdue per Policy]



UNIFORM GUIDANCE

COST PRINCIPLES

(2 CFR 200)



ALLOWABLE



REASONABLE



ALLOCABLE



NECESSARY





UNALLOWABLE COSTS IN EVERY CIRCUMSTANCE

ALCOHOLIC BEVERAGES

Costs of alcoholic beverages are unallowable.

2 CFR 200.423

COSTS OF ENTERTAINMENT

Including amusement, diversion and social activities, and any costs directly associated with such activities (such as tickets to shows or sporting events, meals, lodging, rentals, transportation, and gratuities) are unallowable.

2 CFR 200.438

MEALS & COFFEE BREAKS

No funds may be requested for meals or coffee breaks for intramural meetings of an organization or any of its components, including, but not limited to laboratories, departments, and centers.

2 CFR 200.432





Key TAKEAWAYS

Ask Early! Ask Often!

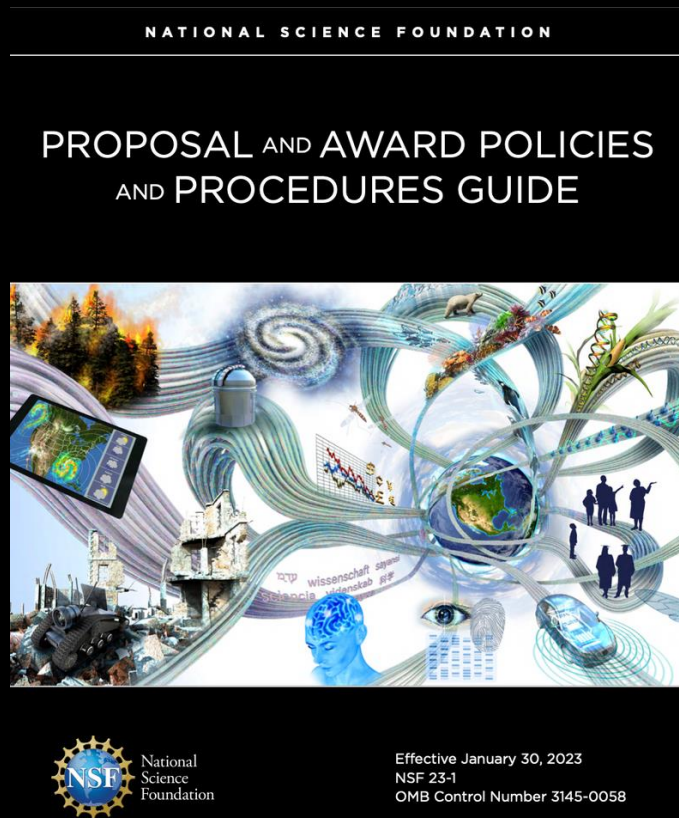


Robert Noyce PI Meeting 2023

- ▶▶ Know requirements (award letter, award terms and conditions, and Uniform Guidance).
- ▶▶ Remember critical project reports dates
- ▶▶ Utilize effective communication. Always provide proposal/award number
- ▶▶ For technical/scientific questions:
Contact the Program Officer (PO)
- ▶▶ For administrative questions:
Contact the Sponsored Research Office (SRO)
- ▶▶ For award-specific questions:
The Sponsored Research Office (SRO) should contact the Grants Management Specialist (GMS)

NEW PAPPG (NSF 23-1) EFFECTIVE JANUARY 30, 2023

“The Proposal & Award Policies & Procedures Guide (PAPPG) is comprised of documents relating to the Foundation's proposal and award process for the assistance programs of NSF.



SCAN ME



Robert Noyce PI Meeting 2023

<https://www.nsf.gov/bfa/dias/policy>



NSF National Science Foundation

Search NSF

Find Funding & Apply ▾ Manage Your Award ▾ Focus Areas ▾ News & Events ▾ About ▾

Join the National Science Foundation

[BROWSE JOB OPENINGS](#)

[Home](#) / [Career Opportunities](#)

Careers at NSF

- [Working at NSF](#)
- [NSF Supports DEIA](#)
- [Job Types](#)
- [How to Apply](#)
- [Rotator Programs](#)
- [Job Openings](#)

Working at NSF

When you find a career at the National Science Foundation, you get a great place to work and the chance to become part of cutting-edge innovation and discovery that

NSF Supports DEIA

Diversity, Equity, Inclusion, and Accessibility (DEIA) is a high priority at NSF, and the Foundation is committed to recruiting and hiring a highly qualified



Thank You!



This may surprise you but...

1. NSF provides total budget reallocation authority (except Participant Support and if the change is large enough to be considered a change in scope/objective).
2. You must adhere to your institution's policies and procedures. NSF cannot override these.
3. Overdue reports will stop the processing of any funded or non-funded actions that your institution may need.
4. We want you to spend, spend, spend your award funding.
5. The award belongs to your institution and not to the PI.
6. The Proposal & Award Policies & Procedures Guide (PAPPG) (NSF 23-1) is your new best friend.
7. You have one FREE No Cost Extension to use. "Grantee Approved NCE"
8. Submitting the Project Outcomes Report initiates the closing of the award.
9. We may contact you to perform a site visit; it's NOT an audit.
10. NSF doesn't monitor or track how often you contact us; we welcome it. Ask early, ask often!



RE-BUDGETING AUTHORITY

NSF allows the institution total budget reallocation authority.

However, you must adhere to your institution's policies and procedures.

You do NOT have to request permission from NSF to make budget changes unless:

▶ Funding needs to be moved OUT of the Participant Support Costs Category.

OR

▶ The change would result in a change of scope or objective.

***If either situation were to arise, permission from the Program Officer is needed and the request can be made through [Research.gov](https://www.research.gov).**



Upcoming Deadlines

1. Make sure your PI/Co-PIs intend to submit annual reports in a timely way. *Due (electronically) during 90-day period BEFORE award anniversary date. Overdue after 90-day period ends.* Please submit well before the report becomes overdue. **Just because a report is submitted doesn't mean it has been approved.**
2. If there is a Change to the PI or Co-PI, please submit your request in Research.gov ASAP.



ASK EARLY, ASK OFTEN!!!

- ▶ DGA 2023 Robert Noyce Team
 - ▶ Denise Martin, Branch Chief dmartin@nsf.gov
 - ▶ Angela Turner, Acting Team Leader aturner@nsf.gov
 - ▶ Denisa Traboini, Grants Management Specialist dtraboin@nsf.gov
 - ▶ Karley Hampton, Student Intern khampton@nsf.gov



What is the Noyce Annual Data Collection?

An annual data collection, separate from submission of annual reports, that provides NSF with information needed to meet Federal reporting requirements and measure progress toward program goals.

- The annual data collection is administered by **ICF (3rd party contractor)**.
- **The ICF Noyce Technical Support team is available to answer questions and assist.**

Noyce Data Collection Timeline

Data Collection Timeline:

Typically open mid-September for 12 weeks
Closes early December

Reporting Period:

Next Cycle –August 14, 2023

What to Expect:

Consistent reminders about reporting deadlines
Support from Noyce Technical Support
Emails sent from support@noyceweb.org



Data Collection Communications

Notifications

Prelaunch Email – Two weeks before opening

Opening Email – Includes instructions for accessing Noyce online data collection system

Phone Calls – Awards that do not log in within first 2 weeks will be contacted by phone

Reminders – Typically 5 sent during the cycle



Summary of Data Collected

Post-Secondary Institutions

School Districts

Nonprofit Organizations (Teaching Fellowship OR Master Teaching Fellowship awards only)

Noyce Recipients

Noyce Interns (Scholarship & Stipend awards only)



Noyce Scholarship Recipients

Data collected for Scholarship recipients:

Academic (year, major, program activities)

Funding (amount and number of terms)

Teaching information (intended level and subject areas)

Completion of teaching preparation program and obtainment of certification

Teaching placement information (school, school district, high-need criteria, grade level, subject areas)

Noyce Teaching Fellowship Recipients

Data collected for Teaching Fellowship recipients:

Academic (degrees held, program activities)

Funding (amount and number of terms)

Teaching information (intended level and subject areas)

Completion of master's degree program and obtainment of certification

Teaching placement information (school, school district, high-need criteria, grade level, subject areas, salary supplement)

Award Reporting Workflow

1st Reporting Year

Baseline Data Only

- New awards only need to report Post-Secondary institution baseline data
- Master Teaching Fellowship awards do not have to report baseline data. In their first year of reporting. Reporting begins later and these awards complete the full survey

2nd Reporting Year

Current Year Data

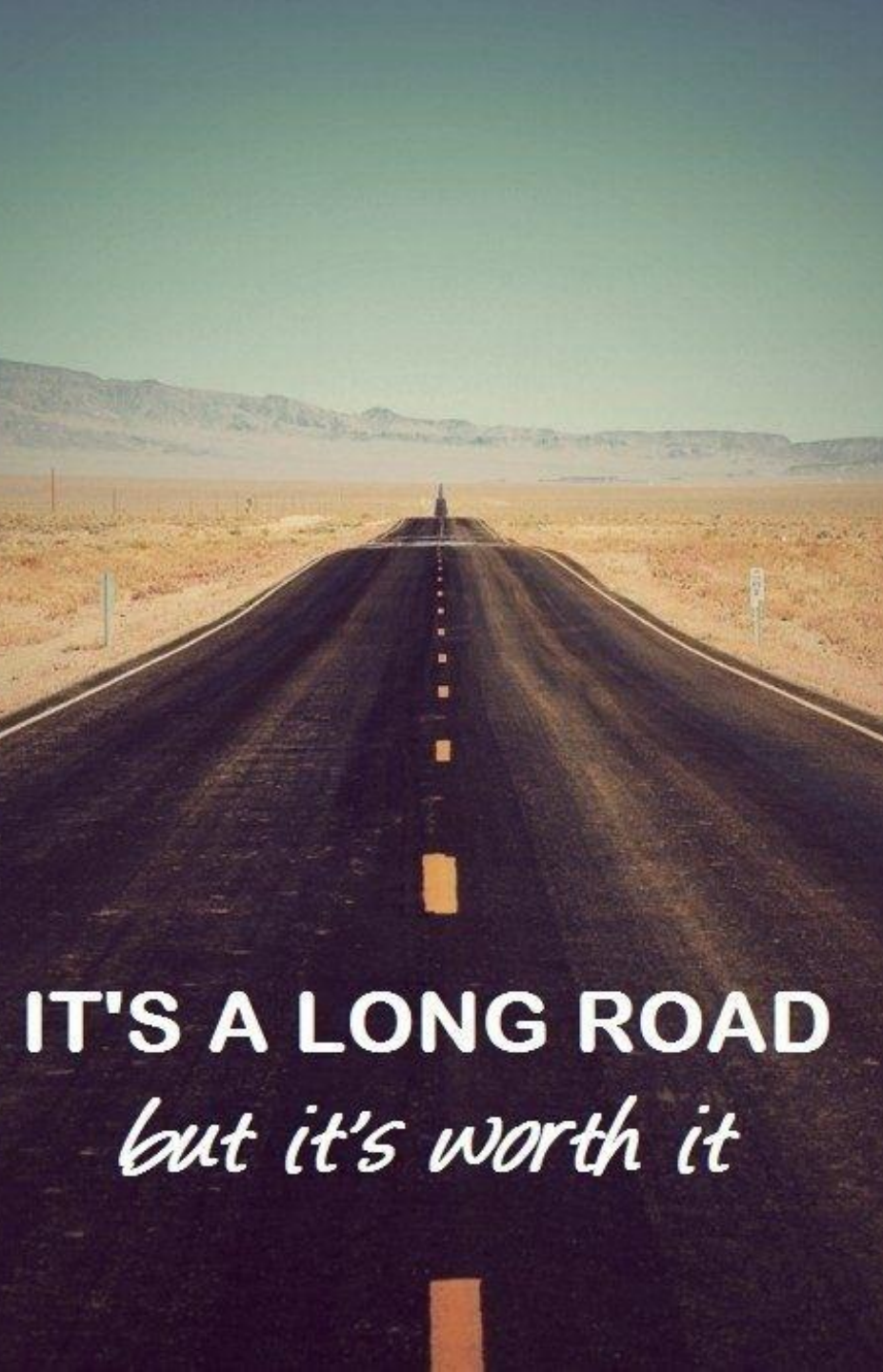
- Awards will report to the full survey questionnaire including Post-Secondary institution data, school district, nonprofit and recipient data

Going Forward

Continued Reporting

- Continue reporting for institutions, school districts, and nonprofits until no longer involved with the project
- Continue reporting until all recipients either meet the teaching requirements or leave the program





Importance of Tracking Your Recipients

Scholarship recipients are expected to teach for 2 yrs per each full year of support received to be fulfilled within 8 yrs

Stipend recipients are expected to teach for 2 yrs to be fulfilled within 4 yrs

Teaching Fellowship recipients are expected to teach for 4 yrs to be fulfilled within 6 yrs

Master Teaching Fellowship recipients are expected to teach for 5 yrs to be fulfilled within 7 yrs



Noyce Annual Survey

September 1, 2013–August 31, 2014

LEGEND

= please complete

= please review

= OK

= please correct

ORC Macro Test Record - 1 (9999991)

LOGOUT

Help & Instructions

FAQ

Respondent Contact Info

Print Data Entered to Date

Download Data Entered to Date

Add Comments/Feedback

Contact Us

Help with this screen

Survey last modified:
June 29, 2015

OMB# 3145-0226
Noyce Program
Expires: February 29, 2016

Welcome to the National Science Foundation's (NSF) Noyce Annual Survey. This survey contains short lists of questions on each of the topics below. **Please complete the sections in order.** The icon beside each link will help you track your progress and alert you to potential problems as you move through the topics. If you have questions that are not addressed in the [Help & Instructions](#), please [contact us](#).

Main Menu

- 1. [Post-Secondary Institutions](#)
- 2. [School Districts](#)
- 3. [Noyce Scholarship Recipients](#)
- 4. [Noyce Stipend Recipients](#)
- 5. [Post-Scholarship/Stipend Follow-up](#)
- 6. [Noyce Summer Interns](#)
- 7. [Send Authorized Final Submission to NSF](#)



 Main menu

 Help with this screen

Survey last modified:
June 29, 2015

OMB# 3145-0226
Noyce Program
Expires: February 29, 2016

[Main Menu](#) > [Post-Secondary Institutions Menu](#) >

Post-Secondary Institution Data

Institution name

Alma Mata University

State

Virginia

Mark the checkbox if this post-secondary institution was not involved in the project during the current reporting period

You should answer the rest of the questions on this screen only if this post-secondary institution was involved in the project during the current reporting period (September 1, 2013–August 31, 2014).



support@noyceweb.org

Noyce Technical Support

Phone: 800-665-8961 ext. 1

Noyce Technical Support staff available 9am – 5pm ET

Peer to Peer Discussion & Mentorship

At your tables, please jointly come up with 1-2 pressing questions the table members agree are important to ask.



Meet
your
Program
Officer

Noyce Program Officers

Kathleen Bergin (& Kimberly Tanner)

Jennifer Ellis (& Robert Mayes)

James Alvarez

Mindy Capaldi (& John Haddock)

Bonnie Green

Jennifer Lewis (& Julio Soto)

Patrice Waller (& Tom Kim)

